



18 Old Oak Common Lane
Acton
London
W3 7EL
T 020 8749 9798
E sales@churchillmathesons.com
www.churchillmathesons.com

Churchill & Mathesons

North End Road, Wembley, London HA9 0UW

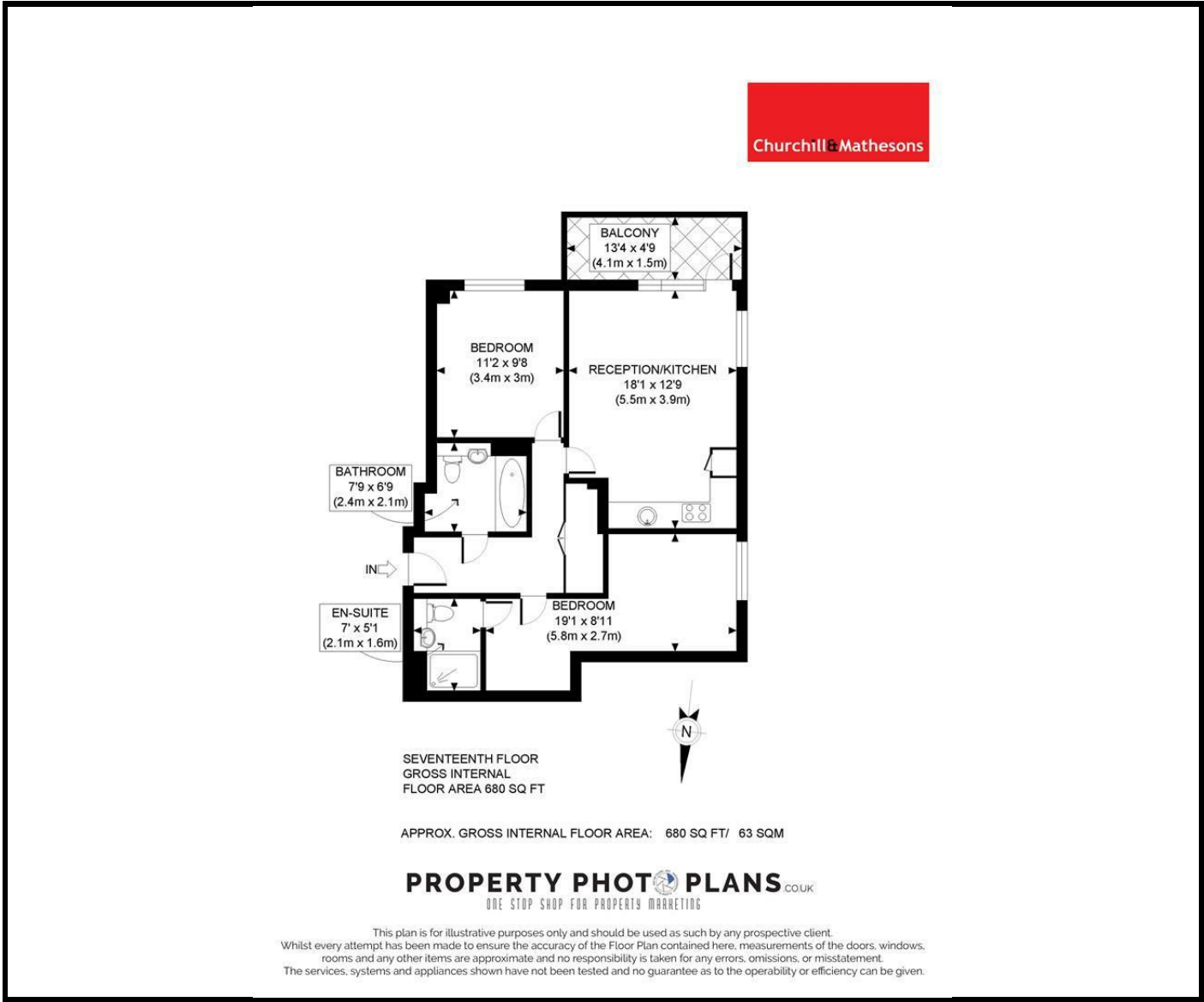
£519 Per Week



KEY FEATURES:

- Two double bedrooms; main bedroom with en suite shower room
- Spacious open plan kitchen living area
- 5 minute walk to Wembley Park Underground station
- Located in a regeneration hotspot
- FURNISHED/UNFURNISHED ~ AVAILABLE NOW

- *This apartment is located In the new iconic development in Wembley built by Barratt Homes
- *Two double bedrooms; main bedroom with en suite shower room
- *Spacious open plan kitchen living area
- *Balcony accessed from the living area
- *Allocated storage spaces
- *Landscaped rooftop gardens
- *5 minute walk to Wembley Park Underground station
- *Located in a regeneration hotspot
- *Hyperoptic broadband available
- *With excellent transport links to central London and five communal roof-top gardens with children's play areas and places to relax or enjoy leisure activities, this development in the heart of Wembley offers the ultimate city lifestyle
- *FURNISHED/UNFURNISHED ~ AVAILABLE NOW
- *Photos are for illustration purposes only



Energy Efficiency Rating		
	Current	Potential
Very energy efficient - lower running costs		
(92 plus) A		
(81-91) B		
(69-80) C		
(55-68) D		
(39-54) E		
(21-38) F		
(1-20) G		
Not energy efficient - higher running costs		
England & Wales	EU Directive 2002/91/EC	

Environmental Impact (CO ₂) Rating		
	Current	Potential
Very environmentally friendly - lower CO ₂ emissions		
(92 plus) A		
(81-91) B		
(69-80) C		
(55-68) D		
(39-54) E		
(21-38) F		
(1-20) G		
Not environmentally friendly - higher CO ₂ emissions		
England & Wales	EU Directive 2002/91/EC	



Whilst every effort is made to give a fair description, the accuracy of these particulars is not guaranteed, neither do they constitute an offer or contract.

CHURCHILL & MATHESONS ESTATE AGENTS have not tested any apparatus, equipment, fitting or services and so cannot verify that they are in working order. The buyer is advised to obtain verification from their solicitor or surveyor. Measurements are correct to within +/-6 A sonic tape is used. None of the statements contained in these particulars or any of our properties are to be relied upon as a representation of fact.